

# Cordless Impact driver

Gebruikershandleiding

**KIBANI®**  
immer das Beste



Lees deze handleiding voor je eigen veiligheid voordat je de kettingzaag in gebruik neemt.  
Bewaar deze handleiding voor toekomstig gebruik.

## 1. APPLICATION

This Impact Wrench is designed for loosening/tightening screws, nuts and bolts in timber, plastic, metal and masonry. It is designed for domestic use and is not designed for commercial, trade or industrial use.



**WARNING! Please read and understand this instruction manual before use and keep it for your future reference. Your power tool should only be passed on together with this instruction manual.**



**WARNING! To reduce risk of injury, only use Xfinity Plus battery pack. Other type of battery pack may burst causing personal injury and damage. The battery pack must be recharged only with the Xfinity Plus battery charger.**

## 2. PARTS DESCRIPTION

Fig.A




- |   |                             |
|---|-----------------------------|
| 1. Drive bit retaining ring             | 4. Battery                  |
| 2. LED worklight                        | 5. Belt hook                |
| 3. Variable speed on/off trigger switch | 6. Forward/reverse selector |

### 3. PACKAGE WRENCH LIST

- 1 x Impact driver
- 1 x Instruction manual
- 1 x Belt hook






- Remove all packing materials
- Ensure all parts on the contents list are present
- Check the appliance, and all accessories for transportation damages



**WARNING! Packaging material are not toys! Children must not play with plastic bags! Danger of suffocation!**

### 4. SYMBOLS

The following symbols are used in this manual and/or on the impact driver.

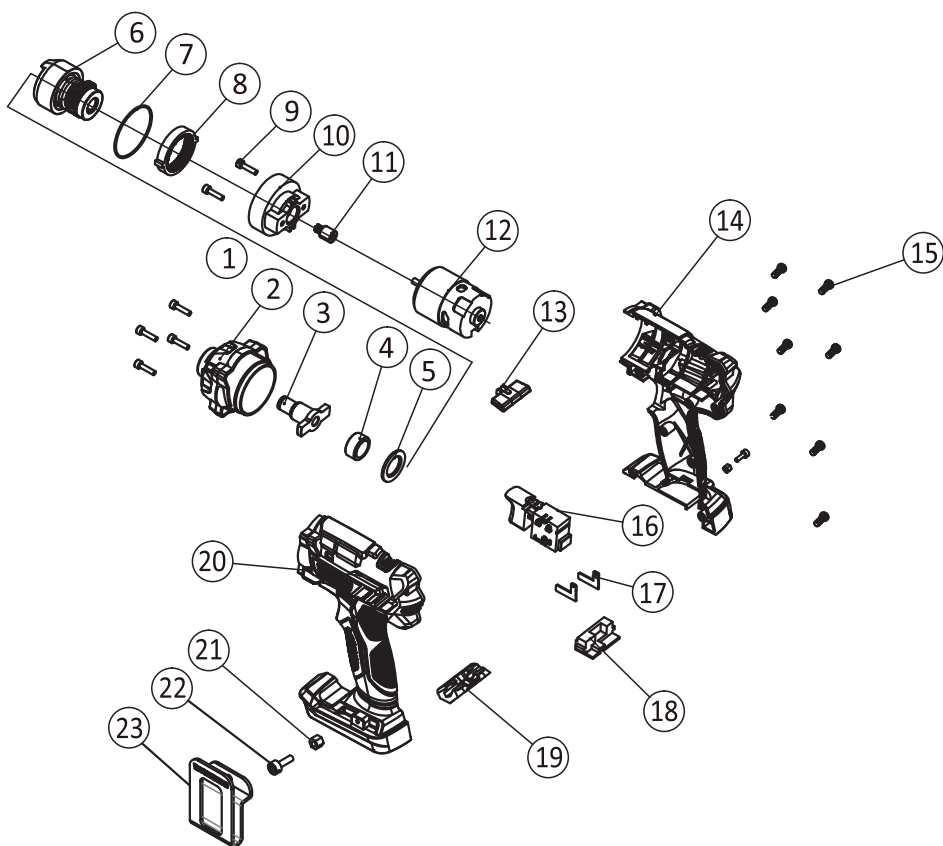
	Denotes risk of personal injury or damage to the tool		Australia Regulatory Compliance mark
	Read instruction manual before use		Dispose appliances according to the regulation and requirement of local council
	Wear hearing protection		

## 9. TROUBLESHOOTING

Problem	Possible causes	Possible solutions
Cannot start	Battery pack not installed properly	Remove and insert the battery pack again
	Battery not charged	Charge the battery
	Internal damage or wear e.g. motor is damaged	Repair by an authorised service centre
Can only run slowly	Battery is not charged	Charge the battery
	Battery wears out	Replace the battery with a new one
Noisy or rattling	Internal damage or wear	Repair by an authorised service centre
Overheat	Ventilation vents blocked	Clean the dust from the ventilation vents
	The impact driver is running for too long	Turn off the impact driver and let it cool down

## 10. TECHNICAL DATA

Model	DPCW1871S
Rated voltage	18Vd.c.
No load speed	0-2300r/min
Impact rate	0-3200bpm
Maximum torque	250 Nm
Battery pack (not included)	18V/1300 m Ah Li-ion



1.Screw	11.Mot or gear	21.Nut
2.head shell	12.Motor	22.Screw
3.shaft	13.Rod	23.Buckle
4.Oil bearing	14.Right housing	
5.Gasket	15.Screw	
6.Strike block	16.Switch	
7.O-ring	17.Polar	
8.Gear box	18.Holder	
9.Screw	19.Bits holder	
10.Fixed frame	20.Left housing	